

# Argus Select Fund: BALANCED

FEBRUARY 27, 2025

## Fund Objective

Growth of capital with a primary exposure to equities, while reducing risk and volatility through fixed income and real estate exposure.

## Investment Philosophy

We focus on obtaining the proper strategic allocation as this is the best way to achieve long term expected returns. Since market conditions change over time, the assumptions used to develop the long term strategic asset allocations are regularly reviewed.

To implement the strategy we have engaged high quality, institutional managers whom we have thoroughly researched.

## Investment Process

Our investment process combines passive strategies, which minimize costs and variance from target returns, with active strategies to create the opportunity for superior results. We create portfolios of high-quality managers whose risk/return profile fits with our overall portfolio objectives. In selecting underlying managers, our central tenets are:

- Ensure managers have a clear investment process
- Provide vigilant oversight of investment managers
- Manage risk through diversification
- Minimize overall costs

## TRAILING RETURNS

|         | Fund   | Composite Benchmark |
|---------|--------|---------------------|
| 1 Month | -1.49% | -1.36%              |
| YTD     | 0.79%  | 1.02%               |
| 1 Year  | 8.94%  | 8.54%               |
| 3 Year* | 3.74%  | 4.28%               |
| 5 Year* | 7.02%  | 6.94%               |

\*Annualized.

The Balanced Strategy is part of the Argus Investment Strategies Fund Ltd., a customized product developed for Argus Pensions by Argus Wealth Management.

## OPERATIONAL STATEMENTS

|                          |                                 |
|--------------------------|---------------------------------|
| Investment Manager       | Argus Wealth Management Limited |
| Share Class <sup>1</sup> | Class X, Accumulation Shares    |
| Strategy Inception       | April 1, 2016                   |
| Manager Fee <sup>2</sup> | 0.0%                            |
| Dealing Frequency        | Weekly                          |
| Domicile                 | Bermuda                         |
| Share Price              | US\$182.71                      |
| Currency                 | US Dollars                      |
| Exit and Entry Fees      | None                            |
| Fund Administrator       | MUFG Fund Services Limited      |
| Investment Consultant    | Mariner Institutional           |

Fund AUM<sup>3</sup>  
US\$279.0mil.

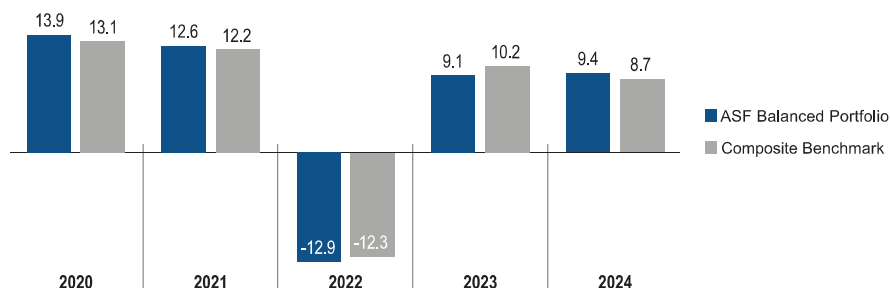
ASF<sup>4</sup> Total AUM  
US\$1.01bil.

Total Expense Ratio  
0.36%

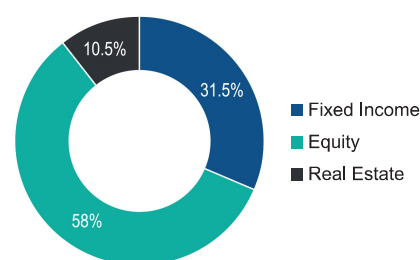
Risk / Reward Profile

LOWER RISK LESS REWARD      HIGHER RISK MORE REWARD

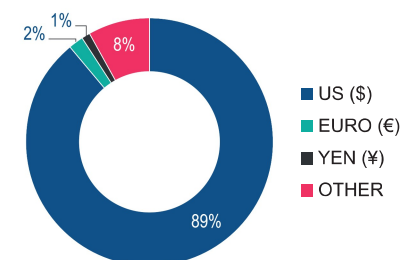
## CALENDAR YEAR RETURNS<sup>5</sup>



## CURRENT ASSET CLASS WEIGHTINGS



## CURRENCY ALLOCATION



## UNDERLYING MANAGERS AND COMPOSITE BENCHMARK\*\*

| Investment                | Underlying Manager | Components of Benchmark                           | Percent |
|---------------------------|--------------------|---|---------|
| US Core Fixed Income      | State Street       | Bloomberg US Aggregate Bond Index                 | 10.0%   |
| US Core Plus Fixed Income | Schroders          | Bloomberg US Aggregate Bond Index                 | 16.5%   |
| Multi Sector Fixed Income | Oaktree            | Bloomberg US Aggregate Bond Index                 | 5.0%    |
| US Large Cap              | Vanguard           | S&P 500 Net Return                                | 23.0%   |
| US Mid Cap                | State Street       | S&P 400 Net Return                                | 10.5%   |
| US Small Cap              | State Street       | Russell 2000 Net Return                           | 3.5%    |
| Global Equity             | BlackRock          | MSCIACWI Net Return USD                           | 17.5%   |
| Emerging Markets Equity   | RBC, BlackRock     | MSCI Emerging Markets Net Return USD              | 3.5%    |
| US Direct Real Estate     | Intercontinental   | NCREIF-ODCE Equal Weight Net Return (1 Month Lag) | 10.5%   |
| Total                     |                    |   | 100.0%  |

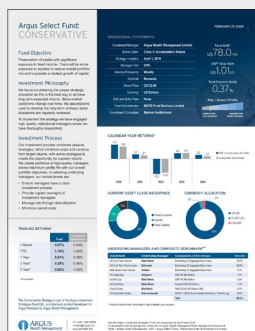
\*\*Historical benchmark composition data available upon request.

<sup>1</sup>See the Argus Investment Strategies Fund Ltd. prospectus for list of each fund

<sup>2</sup>In accordance with the prospectus, there are no Argus Wealth Management fees charged at the fund level

<sup>3</sup>AUM = Assets Under Management <sup>4</sup>ASF = Argus Select Funds <sup>5</sup>Performance Net of Underlying Fund fees

# An Argus Select Fund for every investor profile

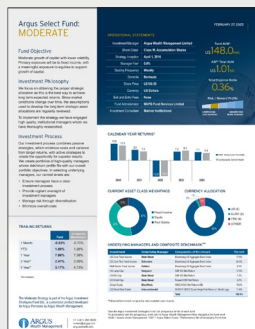
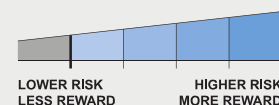


## CONSERVATIVE Fund (Class V)

### Fund Objective

Preservation of capital with significant exposure to fixed income. There will be some exposure to equities to reduce overall portfolio risk and to provide a modest growth of capital.

#### Risk / Reward Profile

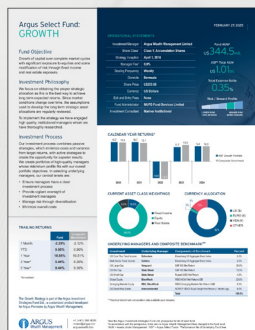
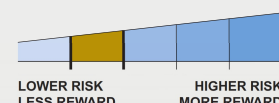


## MODERATE Fund (Class W)

### Fund Objective

Moderate growth of capital with lower volatility. Primary exposure will be to fixed income, with a meaningful exposure to equities to support growth of capital.

#### Risk / Reward Profile

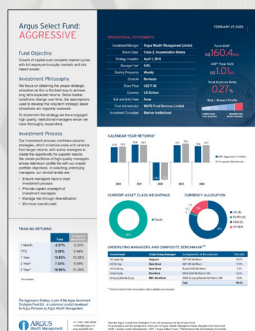
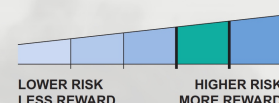


## GROWTH Fund (Class Y)

### Fund Objective

Growth of capital over complete market cycles with significant exposure to equities and some modification of risk through fixed income and real estate exposure.

#### Risk / Reward Profile

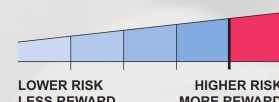


## AGGRESSIVE Fund (Class Z)

### Fund Objective

Growth of capital over complete market cycles with full exposure to equity markets and risk based assets.

#### Risk / Reward Profile



**Argus Investment Strategies Funds Ltd. ("AISFL")** is licensed as a standard fund under the Investment Funds Act 2006 and regulated by the Bermuda Monetary Authority ("BMA").

**Argus Wealth Management Limited ("Argus Wealth")** is a Bermudian financial services company that provides a range of investment solutions to high net worth individuals, endowments, trusts, pension plans, and corporations. Argus Wealth is a wholly owned subsidiary of The Argus Group, is registered under the Investment Business Act 2003 (Bermuda), and licensed to conduct Investment Business by the Bermuda Monetary Authority.

#### Risks and Other Considerations

Past performance is not an indication of future results.

The material contained in this document is for information purposes only. It is not intended as an offer or solicitation for purchase or sale of any security or financial instrument, nor is it advice or a recommendation to enter into any transaction. The information contained herein should not be construed as financial or investment advice on any subject matter. Argus Wealth Management Limited and its related entities do not warrant the accuracy of the information provided herein, either expressed or implied, for any particular purpose. An investment in the Fund will be subject to certain risk factors, please refer to the Prospectus and related documentation for further information. MUFG Fund Services Limited did not prepare the attached document, and does not warrant or assume any liability or responsibility for the accuracy or completeness of the information contained therein.

The Argus Building  
14 Wesley Street  
Hamilton HM11, Bermuda

Tel: +1 (441) 295 9000  
Fax: +1 (441) 295 9001  
invest@argus.bm  
arguswealth.bm